



Unverbindlich empfohlene Verkaufspreise in € zzgl. 19% MwSt. Wiederverkäufer Konditionen erfragen. Änderungen und Irrtum vorbehalten.  
Recommended retail prices. Ask for your retail discount depending on order quantities. Changes might apply without prior notice.

## Regelanlagen für Wandmontage / Controllers for Wall Mounting

### Kompaktserie / Compact Series



TC44.....	€225
TC66.....	€260
TC88.....	€300
TC88e.....	€320

#### Optionen / Options:

2. Steuerausgang/2nd control output .....	€15
Aufpreis für Steckertyp HAN15D .....	€5
Wandhalterung/Wall Mounting Kit .....	€8
Gegenstecker m. Kabel/Socket w/cable HAN7D ....	€13

### Profiserie / Professional Series



TC405.....	€380
TC405/30.....	€490
TC503.....	€350
TC505.....	€400
TC507.....	€500

#### Optionen für / options for TC400 & TC500 series:

3. Steuerausgang/3rd control output .....	€20
Aufpreis für Steckertyp HAN15D .....	€5
Wandhalterung/Wall Mounting Kit .....	€8
Gegenstecker m. Kabel/Socket w/cable HAN7D ....	€13

#### Optionen nur für TC500/ options TC500 series only:

2./3. Regelzonen je / 2nd/3rd control zone ea ..	€120
Wochenschaltuhr / weekly clock.....	€120
Interface RS232 oder/or RS422/RS485 .....	€120
Software WinControl Light.....	kostenlos/free of charge

## Regelanlagen für den Einbau / Panel Mounting Controllers

### Kompaktserie / Compact Series



TC2010.....	€175
TC2044.....	€165
TC2066.....	€195
TC2088.....	€225
TC2088e.....	€245

SW2 (2 zus. Schaltausg./2 add. control outputs)...	€40
DO2 (2 Logikausgänge / 2 SSR outputs) .....	€40
AO2 (2 Analogausgänge / 2 analogue outputs)....	€40
DI2 (2 Digitaleingänge / 2 digital inputs).....	€40
***Alle 4 EA-Optionen/package all 4 IO-options .....	€100
RS (RS232 & RS422/RS485 interface) .....	€40
USB (USB Interface) .....	€40
ETH (Ethernet interface) .....	€100

### Industrieserie / Industrial Series



TC-S2.....	€660
(Einkanal / single loop)	
TC-S2.....	€960
(Mehrkanal / multi loop)	
TC-M2 .....	€1190
(Einkanal / single loop)	
TC-M2 .....	€1590
(Mehrkanal / multi loop)	

AI4 (4 add. analogue outputs, fully isolated) .....	€350
AO4 (4 analogue outputs, fully isolated) .....	€350
SW8 (8 add. control outputs max. 8A/250V) .....	€350
DIO8 (8 Inputs & 8 Outputs 24V DC) .....	€350
PWM4 (4 high speed PWM outputs for SSR) .....	€350
COMBI-A (SW3, DI3, Master/Slave-Bus) .....	€190
COMBI-B (SW3, DI3 or AI3, PWM1) .....	€190
PLC (use MicroWin to programme networks).....	€350
ATM (atmosphere control functionality).....	€350
Software WinConfig.....	kostenlos/free of charge



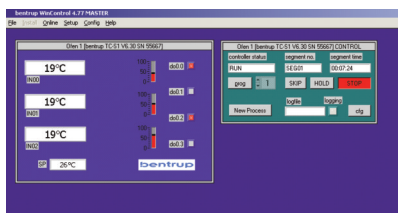
Zubehör / Accessories

Messgeräte / Readings



TM100 Batteriebetrieben / battery operated .....	€145
TM100 Netzbetrieben / mains operated.....	€165
TM100 x 2 Netzbetrieben / mains operated.....	€195
TM100 - O <sub>2</sub> Netzbetrieben / mains operated .....	€570

Software WinControl / SCADA



WinControl Vollversion / full edition (single controller license).....	€890
WinControl Vollversion / full edition (4 controllers license) .....	€1075
Kundenspezifische Oberfläche / customized face .....	€350

*Nachf. Optionen auch für / options below also for WinConfig/WinControl light:*

Konverterkabel/converter cable RS232 to RS485.....	€50
PCI Interface industrial dual port RS485 isolated .....	€245
Customized RS485 network cable per connection .....	€35 + €2 per meter

Thermoelemente und Sonden / Thermocouples and Probes

Wir liefern Fühler und Sensoren jegliche Art (für Temperatur, O<sub>2</sub>, Druck, Fluss usw.). Nachfolgend nur eine Auswahl der gängigsten Typen.  
 We supply all kinds of sensors and probes (for temperatures, O<sub>2</sub>, pressure, flow etc.). Please find below the most popular models only.

**Thermocouple Type S (PtRh10%-Pt)**

max. Temperature 1400°C mechanically resp. 1800°C electrically, wire diameter 0.35mm, ceramic 610 cover diameter 8mm, open contacts (for isolated aluminium head add €10 + bracket €8)

120 mm.....	€80	280 mm.....	€120
150 mm.....	€88	300 mm.....	€128
180 mm.....	€96	350 mm.....	€139
210 mm.....	€104	400 mm.....	€152
250 mm.....	€112	500 mm.....	€176

**Thermocouple Type K (NiCr-Ni)**

max. Temperature 1100°C (short time use up to 1260°C), wire diameter 2.0mm, ceramic 610 cover diameter 8mm, open contacts (for isolated aluminium head add €10 + bracket €8)

120 mm.....	€40	300 mm.....	€60
150 mm.....	€44	350 mm.....	€66
180 mm.....	€48	400 mm.....	€72
210 mm.....	€52	450 mm.....	€78
250 mm.....	€56	500 mm.....	€84

**Sauerstoffsonde / Oxygen Probe 650°C-1400°C**

Circonoxyde probe with integrated type S thermocouple

300x8 mm standard design .....	€885
320x10mm heavy duty industrial style .....	€2190

**Ausgleichsleitung / Compensating Wire**

Type S/R or K, 2x0.22mm, temperature resistant silicone isolation

1 m.....	€3
100 m.....	€150

